

***Spear J Red Angus  
& Triple Rafter Ranch***

***Annual Production Sale  
21 YEARLING BULLS  
3 OPEN HEIFERS***

**NEW  
DATE**

***Tuesday  
April 1, 2025  
1:00 PM (MST)***

***Miles City  
Livestock Commission  
Miles City MT***

**NEW  
LOCATION**

***For More Info, Contact:  
Jo Dee Watson (406) 977-6158  
spearjra@midrivers.com  
Robert Bliss (406) 633-3603***

***Online info:  
on Facebook @  
Spear J Red Angus  
Or***

***LMAAuctions.com/catalog/***

**NEW  
ONLINE  
AUCTION**



**SPEAR J RED ANGUS  
P O BOX 49  
JORDAN MT 59337**



## Welcome to our 36th Annual Production Sale

As we come to the close of the 2024-2025 bull feeding season, we find it time to reflect on where we started and where we have come to. Our humble beginnings were two cows from Sodak Ranch's herd reduction sale in 1979. While they were not the cream of the herd, they served us well in getting a start. It was 1985 before we purchased three more cows from the Bootjack program; also not 'cream', but thrifty, hardy, prolific cows. Those five cows are the foundation of the cattle we have today. There have only been a few more acquired over the years. We just kept buying and breeding to better bulls and saving the best of the heifers to gain numbers. The strong Stayability and HerdBuilder numbers that you will find in the cow lines are a result of this foundation. The cattle reflect a philosophy that has been built over the past 46 years.

The past 4-5 years, drought and a widespread grasshopper infestation has had a significant impact on the range where we summer these cows. As a result, our cow numbers are down, as are the number of bulls we are able to offer. These conditions have also affected weaning weights in terms of pre-wean gain and milk production in the cows. These factors are primarily due to poorer forage quality. We have supplemented with Crystalix, but there is no real replacement for the well cured, good quality native grass that Eastern Montana can produce. The end result is that weaning weights have been down 50-100# on average; therefore yearling weights are also down. Once these calves hit feed, they have been gaining on a par with previous years calves.

We tried a different ration this year, and feel that it is a good feed. It is a canola base for the protein, with added energy and fat. The roughage portion is a combination of barley, alfalfa and grass; fed as a dry matter. We are a long way from corn country, so silage is not an economical option. None of them would be considered fat, but they have been fed to maintain the integrity of structure and soundness that it takes to survive our environment.

The cattle are sound, functional cattle that are expected to produce quality feeders and replacements. The genetic merit has been built on by always pushing to breed up the EPDs through balanced selection and matings that are targeted to beat breed average across all the traits, if possible. A fellow breeder once told me that when you stop finding things to improve on, you should plan your dispersion sale; and I believe that wholly.

We know time will be short by the time you get this catalog, but the bulls are available for viewing at home until Sunday, March 30th. They will be headed to Miles City then, and can be viewed at the yards there until sale time. Videos are up on LMAAuctions.com, courtesy of Miles City Livestock Commission. The bulls will be fertility tested prior to the sale. Carcass scans have been done, so that and the scrotal information will be available at the yards. If you have questions, please contact one of us at the numbers below.

Jo Dee Watson (406) 977-6158 spearjra@midrivers.com

Robert Bliss (406) 633-3603

Find us on Facebook @ Spear J Red Angus for all the updates!



## SALE INFORMATION

Sale Date & Time: Tuesday, April 1, 2025  
Auction starts @ 1:00 PM ( MST)

Auctioneer: Collin Gibbs  
(406) 939-0645  
gibbs.livestock@gmail.com

On-line Auction Service & Video Hosting: Livestock Marketing Association  
LMAAuctions.com  
Please pre-register 48 hours before the auction - see instructions on page

Sale Location: Miles City Livestock Commission  
337 I-94 Business Loop  
Miles City, MT 59301

Seller Contact Information & Sale Day Phone: **406-977-6158 Jo Dee Cell**  
spearjra@midrivers.com  
**406-633-3603 Robert Cell**

Sale Reps: Bart Meged 406-951-3005  
Kyle Hodgekiss 406-781-2846

### General Health:

All bulls have had a general health and fertility exam, performed by a licensed veterinarian, prior to sale day. All bulls are sold as guaranteed breeders. Health certificates will be obtained for interstate transportation, if necessary. Arrangements for any other health requirements will be made prior to delivery or pick-up, according to terms agreed on by both buyer and seller.

### Brand Inspections:

Brand Inspections will be written on sale day, or as needed for delivery at the appropriate time.

### Delivery:

Free delivery on Bulls only, for the first 250 miles. All other deliveries at cost. Long range deliveries may require special arrangements, contracted services, and additional expense to the buyer. Such determinations will be made on a case by case basis. There is a \$75 per head rebate on Bulls taken sale day. Requests to keep animals past May 10th can be arranged at a cost of \$2.50 per head, per day. Be sure to leave good delivery and transfer instructions; and contact information with the clerks at settlement.

***Announcements from the block will take precedence over information in the catalog. Carcass data & scrotal measurements will be available sale day. It will also be posted online as soon as it is available to us.***

**Terms of the Sale:**

Terms of the sale are cash. All settlements, or arrangements for payment by absentee buyers, will be made with the auction house, following the sale and before any cattle will be released. **See additional terms and conditions at the back of the catalog.**

**Absentee Bidding:**

Absentee bids may be placed with us or the auctioneer and will be handled in the strictest confidence and with the assurance of appropriate handling. **Online bidding will be available through Frontier Stockyards Please visit the site @ frontierstockyards.com prior to the sale and make sure you are registered and approved to bid.**

**Auction Procedure:**

Cattle will be delivered to the yards on Sunday, March 30th and will be available for viewing on Monday, March 31st and Tuesday, April 1st prior to the sale. The auction will begin at 1:00 PM. All bidding disputes will be handled by the auctioneer at his discretion. Decisions of the auctioneer and sale management are final.

Be aware that a minimum bid amount will be established on the bulls and may vary to some degree according to the quality.

The bulls will be penned with room to move them around for evaluation by prospective buyers. Bidding will be open for online customers during the live auction as well.

Please make settlement at the end of the auction and before attempting to load out. You will need brand papers and your settlement sheets to load out so that you go home with the appropriate animals. Load outs will be done by auction house personnel.

**Guarantees**

All bulls are sold as guaranteed breeders. Every effort has been made to represent the cattle fairly and accurately.

***Please read additional terms of guarantee included in the terms and conditions at the back of the catalog.***

**Retained Interest**

All bulls will be sold as full possession and 1/2 semen interest.

This means that the purchaser buys the bull for what he bids and gets 100% resale value when they decide to sell him. It does give Spear J Red Angus the option to collect, use, and market semen from the bull. Said collection will be done at the seller's expense; and during a time when the purchaser is not using the bull for breeding.

**Please do this 48-72 hours ahead of auction time to assure that you are ready to login and bid for the sale.**

## **HOW TO REGISTER TO BID ON LMA AUCTIONS**

**How to Register to Bid**

1. Go to LMAAuctions.com online and scroll to Offline Auctions and on down the list to Miles City Livestock Commission
2. Click on Register to Bid next to "Miles City Livestock Commission"
3. You will be required to "Sign Up" for a new account, if this is the first time you are logging in. Once you complete this step you can register to bid. (PLEASE write down your username and password and make sure your caps lock is not on, if you forget your login you will have to contact LMA Directly)
4. The form will auto-fill with information that you provided when registering as a viewer. You are required to complete the fields highlighted red ( First Name, Last Name, Address 1, City, State, Zip, Main Phone, Bank Name, Bank City, Bank State, Loan Officer and Bank Phone).
5. Check mark the authorization
6. Click on Register at the bottom of the page.

Once you fill out the buyer's registration form you will receive either an Approval email, a Declined bidder email or an email requesting that you complete a Buyer Registration and Consent Agreement and return it to the auction in order to complete your bidder request. If additional information is needed you will be sent an email with a Buyer Registration Consent Agreement attached for you to complete and return to the market by email or fax.

To expedite this process, it is suggested that you contact your bank to give them approval to release your information and notifying them of your intent to bid online with the auction. While waiting for approval, you will see Buyer # Pending.

Once approved, log out and back in to the site to refresh your accounts. You can also click on My Account to see the full list of auctions that you are registered with. Any questions about bidding, sale terms and conditions should be directed to each auction that you are doing business with. It is recommended that you contact the auctions directly by phone to inquire about approval time and terms of payment.

Your bidder registration is shared only with the markets where you have registered. Each market controls their own buyer database and approvals.

If you need additional support you may contact the LMAAuctions Technical Support team at 800-821-2048.



**REFERENCE SIRES**



**HRR STEWARD 0264**

DOB 03-16-2020 REG# 4295139 BCO/0264  
BW 96/114 205 WT 726/108 365 WT 1216/108



MLK CRK ADVOCATE 4304  
MLK CRK STEWARD 7334  
MLK CRK THUNDER 499  
SHOCO DATA  
HRR MADAME PRIDE 117  
S A V MADAME PRIDE 2330

ProS 141 HB 72 GM 69 CED 14 BW-1.4 WW 75 YW 113 MILK 22 ME 12 HPG 13  
CEM 9 ST 17 MARB 0.82 YG 0.06 CW 24 REA 0.20 FAT 0.03 ADG 0.23 DMI 0.78

Our pick from the 2021 Heart River sale. 0264 stamps his progeny with a meaty butt, mostly moderate frame, easy stride, dark solid feet, and a dark red coat. He is an easy fleshing bull with great libido. Production Averages: Adjusted BW 78#, NR 102, YR 102, IMF Ratio 113, REA Ratio 103, BF Ratio 103. Some of the first daughters have calves in this sale. So far, they look to maintain their femininity, the udders look good and the feet and legs look sturdy, plus they did a nice job with their calves.



**RED FRITZIE 837**

DOB 01-30-2018  
REG# 4010542 RED/837  
BW 76/104 205 WT 684/103  
365 WT 1174/109

FRITZ JUSTICE 8013  
FRITZ JUSTICE 434A  
FRITZ BLOCKANA 3030  
K2 CQSH TRADESMAN 841  
RED TAMARA 6077  
RED CHARLOTTE 0506

ProS 104 HB 57 GM 48 CED 18 BW -4.6 WW 61 YW 104 MILK 29 ME 13 HPG 9  
CEM 11 ST 17 MARB 0.29 YG 0.18 CW 34 REA 0.14 FAT 0.05 ADG 0.27 DMI 1.00

If bulls were bought on a whim, that is what happened here. All jokes aside, when I saw the profile and the length of this bull, I was pretty impressed. He passes that length on, along with the smooth, clean lines and the fluidity of movement. Production Averages: Adjusted BW 79#, NR 100, YR 104, IMF Ratio 92, REA Ratio 100, BF Ratio 96. The females from him are feminine and long with moderate frame; they flesh easy and are easy on the eye when weaning time rolls around. He has four daughters with progeny in the sale; I think you might like some of them!



**RED ED 863**

DOB 02-03-2018  
REG# 4010566  
RED/863  
BW 84/114  
205 WT 752/113  
365 WT 1310/121

BECKTON EPIC R397 K  
RED ED 1018  
RED DUBA 3468  
FRITZ JUSTICE 434A  
RED FRANNY 6083  
RED JIGGY 4077

ProS 108 HB 27 GM 81 CED 10 BW 0.3 WW 86 YW 150 MILK 25 ME 26 HPG 10  
CEM 7 ST 15 MARB 0.48 YG 0.09 CW 47 REA 0.28 FAT 0.01 ADG 0.40 DMI 1.41

'Fast Eddy' has served us well, but these will be the last crop for us. Redland's have taken him to collect semen, so we are excited to see how he works for them as well. We selected him for his growth and carcass merit and those things proved out pretty well for us. Production Averages: Adjusted BW 81#, NR 103, YR 105, IMF Ratio 110, REA Ratio 103, BF Ratio 112. The daughters are deep in the rib and hip, most have good frame size. To date, the udders are holding up well and they appear to be structurally sound.



**REFERENCE SIRES**

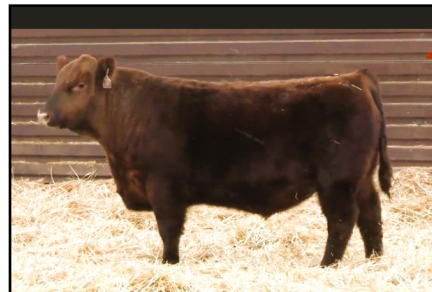
**RED REDEMPTION 031**

DOB 01-29-2020 REG# 4367721  
RED 031  
BW 85/100 205 WT 786/104 365 WT 1265/101

BECKTON NEBULA P P707  
BROWN JYJ REDEMPTION Y1334  
JYJ MS JOLENE W16  
HOLDEN BREAK THRU 143  
RED HOLLY 4032  
RED PERKY 804

ProS 112 HB 68 GM 44 CED 12 BW -2.2 WW 57 YW 89 MILK 24 ME 3 HPG 9  
CEM 7 ST 19 MARB 0.46 YG 0.07 CW 18 REA 0.13 FAT 0.03 ADG 0.20 DMI 0.75

We used this bull to breed coming 3's in 2022 and 2023. For 2021 and 2024 we put him with a pen of mixed age cows. Most of the offspring are moderate of frame, with a lot of length. They show some great width and depth as well. Production averages: Adj BW 77#, NR 97, YR 101, IMF Ratio 107, REA Ratio 92, BF Ratio 87. Bear in mind that these young cows calves are all getting ratioed with the aged cows calves as I don't believe in multiple contemporary groups beyond separating out the first year calves. The first daughters hit production in 2024 and one of them has a Lot 418.



**STRA ADMIRAL 2013**

DOB 02-27-2022 REG# 4663381  
STRA/2103  
BW 68/85 205 WT 717/102 365 WT 1176/98

STRA GENERAL 882  
STRA ADMIRAL 0150  
STRA BANDITO 8132  
RREDS SENECA 731C  
STRA COLLEEN 058  
STRA COLLEEN 619

ProS 128 HB 98 GM 30 CED 16 BW -4.4 WW 73 YW 100 MILK 23 ME 4 HPG 12  
CEM 12 ST 19 MARB 0.50 YG 0.24 CW 26 REA -0.02 FAT 0.06 ADG 0.17 DMI 0.84

This light BW champ was bought just for breeding heifers and he worked very well for that. The calves had an average adjusted BW of 78#. The posted an average NR of 105 and average YR of 101. Pretty respectable! It looks like they are going to hit the ground and go. He is a fluid moving bull and seems to cover cows and country well.

**AI SIRES**

**C-BAR COLLATERAL 203J**

4534315 MCBR/203J  
BW 69/90 205 WT 794/106 365 WT 1174/101  
LACY COLLUSION 115F X  
C-BAR STONY 907G  
(9 MILE FRANCHISE 6305)

ProS 123 HB 71 GM 52 CED 17 BW -3.6 WW 51 YW 87 MILK 29 ME 5 HPG 10  
CEM 10 ST 18 MARB 0.42 YG 0.03 CW 15 REA 0.15 FAT 0.02 ADG 0.22 DMI 0.57



**5L 9 MILE RESONATE 1113**

4558479 DYK/1113  
BW 77/103 205 WT 650/108 365 WT 1157/106  
BIEBER CL ENERGIZE F121 X  
9 MILE DORY JIBA 6922-9126  
(9 MILE FRANCHISE 6305)

ProS 129 HB 45 GM 84 CED 16 BW -3.7 WW 67 YW 119 MILK 31 ME 6 HPG 15  
CEM 10 ST 11 MARB 0.46 YG 0.09 CW 40 REA 0.39 FAT 0.04 ADG 0.33 DMI 0.71

**SALE BULLS**

401		SJRA 837 MAXSIM 401										
B	03-25-2024	B — 99.9%										
JDI / 401		# 5063007										
	FRITZ JUSTICE 8013		Ratio	Data								
	FRITZ JUSTICE 434A		Act. BW	113	93							
	FRITZ BLOCKANA 3030		Adj. WW	101	623							
RED FRITZIE 837			Adj. YW	108	1115							
	K2 CQSH TRADESMAN 841 380											
	RED TAMARA 6077											
	RED CHARLOTTE 0506											
	FRITZ GRAND OSCAR 8014		EPD	Top%	Data							
	FRITZ GRAND OSCAR 008		MARB	0.24	90							
	FRITZ BETSY 8046		YG	0.03	30							
SJRA F008 JAYLINA 3047			CW	22	56							
	LAUBACH TURBO 710		REA	0.29	22							
	SJRA 710 JAYLINA 1017		FAT	0.03	68							
	SJRA 37N JAYLINA 6002		ADG	0.26	36							
MPPA: 100 Dam Age: 03-28-2013			DMI	0.82	61							
	ProS	HB	GM	CED	BW	WW	YW	MILK	ME	HPG	CEM	STAY
EPD	112	74	39	15	-2.2	64	105	26	14	10	10	20
Top%	37	14	76	21	43	58	47	48	94	87	5	3

One of the top gaining bulls in the lot. A larger framed bull with nice thickness, a clean and long top: the look of a good cow bull type. This dam's progeny are noted for strong growth to yearling and larger ribeye (109 ratio on 5 head). The dam is a big frame cow, strong on fertility with 10 calves on a 366 day average interval; top 1% STAY, top 5% HB, to 4% REA. Note bull is Category 1B.



LOT 401

**SALE BULLS**

403		SJRA 0264 MISSION 403										
B	04-15-2024	A — 100%										
JDI / 403		# 5063011										
	MLK CRK ADVOCATE 4304		Ratio	Data								
	MLK CRK STEWARD 7334		Act. BW	95	78							
	MLK CRK THUNDER 499		Adj. WW	103	634							
HRR STEWARD 0264			Adj. YW	101	1040							
	SHOCO DATA											
	HRR MADAME PRIDE 117											
	S A V MADAME PRIDE 2330											
	FISCHER BILLINGS 7177		EPD	Top%	Data							
	SJRA 7177 WILD BILL 9622		MARB	0.50	33							
	JMI 2062 SPLENDOR 6022		YG	0.05	41							
SJRA 9622 CALAMITY 4006			CW	22	58							
	SJRA 42GB PIONEER 605		REA	0.16	43							
	SJRA 605 LUCKY LASS 0006		FAT	0.02	52							
	SJRA C62 LADEE LASS 2463		ADG	0.23	59							
MPPA: 100 Dam Age: 09-13-2014			DMI	0.74	51							
	ProS	HB	GM	CED	BW	WW	YW	MILK	ME	HPG	CEM	STAY
EPD	133	80	53	13	-1.0	65	102	24	10	11	9	20
Top%	13	8	43	47	64	51	55	70	82	58	11	4

Clean front, moderate frame, level top, thick quarter; all good descriptors of this nice heifer bull. The bull progeny of this dam are always popular with our customers! A great line of deep ribbed, meaty kind of cows that milk well, are easy fleshing, and are of good, sound structure. Dam 4006 calves have ave BW of 77#, NR 101, YW 102, MB 103.



LOT 403

LOT 402



LOT 404



402		SJRA 0264 MARSHALL 402										
B	04-08-2024	A — 100%										
JDI / 402		# 5063009										
	MLK CRK ADVOCATE 4304		Ratio	Data								
	MLK CRK STEWARD 7334		Act. BW	104	85							
	MLK CRK THUNDER 499		Adj. WW	122	755							
HRR STEWARD 0264			Adj. YW	118	1215							
	SHOCO DATA											
	HRR MADAME PRIDE 117											
	S A V MADAME PRIDE 2330											
	CBR RAMBUR 354-671		EPD	Top%	Data							
	SJRA 671 TRAILBLAZER 8567		MARB	0.50	90%							
	JMI 2152 GOLD QUEEN 4567		YG	0.01	23%							
SJRA 8567 PASCION 4001			CW	20	63%							
	SHOC HIRB-LS RAMBLER C62		REA	0.23	29%							
	SJRA C62 RED PASSION 2476		FAT	0.02	48%							
	SJRA 361 INFINITY 8267		ADG	0.23	60%							
MPPA: 105 Dam Age: 03-25-2014			DMI	0.80	58%							
	ProS	HB	GM	CED	BW	WW	YW	MILK	ME	HPG	CEM	STAY
EPD	113	63	51	11	-0.1	67	104	29	11	10	6	18
Top%	36	30	48	79	82	45	52	22	86	74	64	9

If I were choosing a bull based solely on the merits of the cow, this would be my pick. At the age of 10 she still cranked out the #1 indexing calf at weaning. 402 is obviously strong on growth traits; typical of this dam's production (Ave ratios BW 102 NR 105 YR 107 REA 107) This is a very strong producing cow line; milky cows with longevity and great structure.

404		SJRA 0264 MAGNUM 404										
B	04-02-2024	A — 100%										
JDI / 404		# 5063013										
	MLK CRK ADVOCATE 4304		Ratio	Data								
	MLK CRK STEWARD 7334		Act. BW	107	88							
	MLK CRK THUNDER 499		Adj. WW	113	695							
HRR STEWARD 0264			Adj. YW	108	1110							
	SHOCO DATA											
	HRR MADAME PRIDE 117											
	S A V MADAME PRIDE 2330											
	FRITZ GRAND OSCAR 8014		EPD	Top%	Data							
	FRITZ GRAND OSCAR 008		MARB	0.54	27							
	FRITZ BETSY 8046		YG	0.05	40							
SJRA F008 STORM 5016			CW	24	51							
	CBR RAMBUR 354-671		REA	0.19	37							
	SJRA 671 FLURRY 9008		FAT	0.02	52							
	SJRA 78E FLURRY 1395		ADG	0.24	53							
MPPA: 105 Dam Age: 03-21-2015			DMI	0.83	62							
	ProS	HB	GM	CED	BW	WW	YW	MILK	ME	HPG	CEM	STAY
EPD	130	76	54	11	0.2	70	108	26	13	11	8	20
Top%	15	12	40	75	84	32	42	43	93	61	23	4

When it comes to thickness and length in the lot, this is the top guy. He is packing a lot of dimension on a moderate frame. He has been an impressive bull since birth. Dam 5016 is a high volume, dark red cow that pushes strong growth in her progeny (Ave NR 106, YR 105). These Grand Oscar daughters are stout cows with good udder structure and excellent feet and legs. The cow line is noted for strong growth traits.



**SALE BULLS**

LOT 405



LOT 406

405		SJRA 837 MAVERICK 405											
B	03-25-2024	A — 100%		Ratio		Data							
JDI / 405		5063015		Act. BW	94	78							
	FRITZ JUSTICE 8013			Adj. WW	109	672							
	FRITZ JUSTICE 434A			Adj. YW	103	1062							
	FRITZ BLOCKANA 3030												
<b>RED FRITZIE 837</b>				EPD		Top%	Data						
	K2 CQSH TRADESMAN 841 380			MARB	0.30	82							
	RED TAMARA 6077			YG	0.11	70							
	RED CHARLOTTE 0506			CW	26	39							
	VGW BRAVO 955			REA	0.11	51							
	VGW ENERGY 222			FAT	0.03	73							
	VGW RT-STAR 0831			ADG	0.26	38	2.43						
<b>SJRA V222 SPRITE 6005</b>				DMI	0.86	65							
	SJRA 42GB PIONEER 605												
	SJRA 605 PIXIEDUST 8046												
	SJRA 3009 MOONDUST 5013												
MPPA: 103 Dam Age: 04-02-2016													
	ProS	HB	GM	CED	BW	WW	YW	MILK	ME	HPG	CEM	STAY	
EPD	112	70	42	14	-2.9	64	105	26	12	9	9	20	
Top%	38	19	69	30	29	57	47	50	89	95	14	4	

A larger frame, lighter BW bull that is pretty clean made. Maybe a bit more bone than I would like in a sure shot heifer bull. He has great length and a long, level topline: also, good depth of rib and flank. Dam 6005 is built similar to the bull; good genetics for growth with Ave NR 103 & YR 110. MGD 8046 was one of the better cows to ever walk our range.

406		SJRA 863 MAXWELL 406											
B	03-21-2024	A — 100%		Ratio		Data							
JDI / 406		5063017		Act. BW	94	78							
	BECKTON EPIC R397 K			Adj. WW	103	636							
	RED ED 1018			Adj. YW	104	1072							
	RED DINA 3468												
<b>RED ED 863</b>				EPD		Top%	Data						
	FRITZ JUSTICE 434A			MARB	0.36	71							
	RED FRANNY 6083			YG	0.05	41							
	RED JIGGY 4077			CW	26	39							
	VGW BRAVO 955			REA	0.10	53							
	VGW ENERGY 222			FAT	0.01	27							
	VGW RT-STAR 0831			ADG	0.30	14	2.72						
<b>SJRA V222 GALM GAL 6026</b>				DMI	0.86	65							
	CBR RAMBUR 354-671												
	SJRA 671 GLAMOUR 8022												
	SJRA ACE GLAMOURACE 2458												
MPPA: 99 Dam Age: 04-09-2016													
	ProS	HB	GM	CED	BW	WW	YW	MILK	ME	HPG	CEM	STAY	
EPD	114	61	53	10	-0.0	71	119	22	14	10	6	19	
Top%	34	34	42	84	82	29	20	81	95	88	70	5	

The eye catcher of the pen; clean made, dead level down the top, great profile, medium frame. Dam 6026 just perks along and does her job each year, producing a solid calf every time. She is moderately made and comes from the #1 cow for longevity in our program. This cow line has a tight calving interval for at least four generations.

**SALE BULLS**

407		SJRA WHY 0264 MAISON 407											
B	04-09-2024	A — 100%		Ratio		Data							
JDI / 407		5063019		Act. BW	85	71							
	MLK CRK ADVOCATE 4304			Adj. WW	96	592							
	MLK CRK STEWARD 7334			Adj. YW	97	1004							
	MLK CRK THUNDER 499												
<b>HRR STEWARD 0264</b>				EPD		Top%	Data						
	SHOCO DATA			MARB	0.52	29							
	HRR MADAME PRIDE 117			YG	0.08	59							
	S A V MADAME PRIDE 2330			CW	22	55							
	SJRA 42GB PIONEER 605			REA	0.08	57							
	SJRA S605 MINERAL 332			FAT	0.02	58							
	SJRA 508 CRIMSON 8034			ADG	0.22	64	2.57						
<b>WHY S332 LAKOTA 7001</b>				DMI	0.71	47							
	BASIN EXT 1925												
	FISCHER LAKOTA 768												
	MLK CRK LAKOTA 068												
MPPA: 99 Dam Age: 03-15-2017													
	ProS	HB	GM	CED	BW	WW	YW	MILK	ME	HPG	CEM	STAY	
EPD	123	71	52	11	-0.1	67	103	24	9	12	7	19	
Top%	23	17	45	73	80	43	54	72	78	44	46	8	

Sure shot heifer bull type; moderate frame and stature, smooth front and clean lines. Dam 7001 has ave BW of 74# on 6 calves. She is moderate sized, ultra feminine, and has great udder structure. 7001 has consistently raised light BW calves that can stand at near herd average for growth. Her previous sale bull also posted good ribeye scores. MGD 768 produced through age 13.

408		SJRA 863 MERRITT 408											
B	03-27-2024	A — 100%		Ratio		Data							
JDI / 408		5063021		Act. BW	98	81							
	BECKTON EPIC 397K			Adj. WW	99	609							
	RED ED 1018			Adj. YW	98	1012							
	RED DINA 3468												
<b>RED ED 863</b>				EPD		Top%	Data						
	FRITZ JUSTICE 434A			MARB	0.40	54							
	RED FRANNY 6083			YG	0.06	48							
	RED JIGGY 4077			CW	29	28							
	VGW BRAVO 955			REA	0.14	46							
	VGW ENERGY 222			FAT	0.01	35							
	VGW RT-STAR 0831			ADG	0.31	13	2.52						
<b>SJRA V222 MOXIE 7005</b>				DMI	0.97	76							
	SJRA 42GB PIONEER 605												
	SJRA 605 PIXIEDUST 8046												
	SJRA 3009 MOONDUST 5013												
MPPA: 101 Dam Age: 04-06-2017													
	ProS	HB	GM	CED	BW	WW	YW	MILK	ME	HPG	CEM	STAY	
EPD	117	59	57	11	-1.2	72	120	25	15	9	7	19	
Top%	30	38	33	73	60	27	18	53	96	93	45	7	

Moderate BW bull that is built for calving ease; smooth shoulder, clean lines, light bone, medium frame for the pen. Dam 7005 is full sister to dam of Lot 405, but a smaller cow in her type. Her ave BW is 74# with ave NR 101 & YR 102; her calving interval has only varied by 8 days over 6 years. She stands on good feet and has nice udder structure.

LOT 407



LOT 408

**SALE BULLS**

409		SJRA 0264 MEYER 409										
B	04-03-2024	A — 100%	Ratio		Data							
JDI / 409		5063023	Act. BW	105	87							
	MLK CRK ADVOCATE 4304		Adj. WW	109	672							
	MLK CRK STEWARD 7334		Adj. YW	103	1058							
	MLK CRK THUNDER 499											
<b>HRR STEWARD 0264</b>			EPD		Top%	Data						
	SHOCO DATA		MARB	0.53	27							
	HRR MADAME PRIDE 117		YG	0.04	36							
	S A V MADAME PRIDE 2330		CW	21	62							
			REA	0.16	43							
	SJRA 42GB PIONEER 605		FAT	0.02	48							
	SJRA S605 MINERAL 332		ADG	0.23	63	2.41						
	SJRA 508 CRIMSON 8034		DMI	0.74	52							
<b>SJRA S332 FANCI 7018</b>												
	SJRA 671 TRAILBLAZER 8567											
	SJRA 8567 FANCI 3011											
	SJRA W236 FANCI 5006											
MPPA: 104 Dam Age: 04-03-2017												
	ProS	HB	GM	CED	BW	WW	YW	MILK	ME	HPG	CEM	STAY
EPD	124	73	51	10	0.5	69	105	26	10	11	7	19
Top%	21	14	46	84	88	37	48	43	83	58	58	4

Another very eye appealing bull; nice profile, moderate frame, good thickness and depth. Dam 7018 is also and eye catcher; broody looking, but clean down the top and angular through the front, good udder, good feet. The cow line carries stronger marbling scores and produces cows that are of good length and depth that milk well.



LOT 409



LOT 410

410		SJRA 837 MAGNUS 410										
B	03-30-2024	A — 100%	Ratio		Data							
JDI / 410		5063025	Act. BW	99	82							
	FRITZ JUSTICE 8013		Adj. WW	107	661							
	FRITZ JUSTICE 434A		Adj. YW	108	1113							
	FRITZ BLOCKANA 3030											
<b>RED FRITZIE 837</b>			EPD		Top%	Data						
	K2 CQSH TRADESMAN 841 380		MARB	0.33	77							
	RED TAMARA 6077		YG	0.09	61							
	RED CHARLOTTE 0506		CW	29	27							
			REA	0.20	34							
	5L LEGEND 1553-425V		FAT	0.03	70							
	HRR LEGEND 4103		ADG	0.26	37	2.83						
	HRR BONNEBELL 253		DMI	1.05	82							
<b>SJRA 4103 SIERRA 8002</b>												
	VGW BENCHMARK 728											
	SJRA 728 SIERRA 0004											
	SJRA ACE FAIRLIGHT 1418											
MPPA: 103 Dam Age: 03-25-2018												
	ProS	HB	GM	CED	BW	WW	YW	MILK	ME	HPG	CEM	STAY
EPD	98	54	45	12	-1.6	66	108	25	9	10	6	17
Top%	58	49	63	57	53	49	42	52	79	81	68	19

This bull would catch my eye in a lot of pens. A meaty, bigger frame bull; dark cherry red, smooth front, good depth of rib and hip, excellent length. A bit more spirited than most, but not honky. Dam 8002 is a larger cow, clean made, good udder suspension, and good structure and feet. Great production; Ave BW 86#, NR 104, YR 104, REA 109.

**SALE BULLS**

411		SJRA 0264 MERRICK 411										
B	03-31-2024	A — 100%	Ratio		Data							
JDI / 411		5063027	Act. BW	105	87							
	MLK CRK ADVOCATE 4304		Adj. WW	108	664							
	MLK CRK STEWARD 7334		Adj. YW	102	1050							
	MLK CRK THUNDER 499											
<b>HRR STEWARD 0264</b>			EPD		Top%	Data						
	SHOCO DATA		MARB	0.61	18							
	HRR MADAME PRIDE 117		YG	0.07	50							
	S A V MADAME PRIDE 2330		CW	28	29							
			REA	0.19	36							
	5L LEGEND 1553-425V		FAT	0.02	52							
	HRR LEGEND 4103		ADG	0.25	45	2.41						
	HRR BONNEBELL 253		DMI	1.05	83							
<b>SJRA 4103 MOONBEAM 8005</b>												
	VGW BENCHMARK 728											
	SJRA 728 MOONBEAM 0041											
	SJRA C62 MOONBEAM 6012											
MPPA: 107 Dam Age: 03-19-2018												
	ProS	HB	GM	CED	BW	WW	YW	MILK	ME	HPG	CEM	STAY
EPD	131	72	59	13	-0.6	73	113	26	11	12	9	18
Top%	15	16	31	56	75	21	30	48	86	51	18	12

A fluid moving bull with moderate frame, good width of hip and top. Dam 8005 has consistently produced good performing calves in terms of growth to weaning and yearling from the moderate BW ave of 81#. These Legend daughters have some size, but seem to produce well. The cow line is loaded with growth oriented cattle



LOT 411



LOT 412

412		SJRA 0264 MILO 412										
B	04-12-2024	A — 100%	Ratio		Data							
JDI / 412		5063029	Act. BW	95	79							
	MLK CRK ADVOCATE 4304		Adj. WW	100	620							
	MLK CRK STEWARD 7334		Adj. YW	98	1006							
	MLK CRK THUNDER 499											
<b>HRR STEWARD 0264</b>			EPD		Top%	Data						
	SHOCO DATA		MARB	0.57	22							
	HRR MADAME PRIDE 117		YG	0.09	61							
	S A V MADAME PRIDE 2330		CW	31	21							
			REA	0.19	37							
	VGW BENCHMARK 728		FAT	0.02	59							
	SJRA 728 SNOWCREST 222		ADG	0.26	34	2.41						
	SJRA 37N CAYENNE 7009		DMI	1.08	84							
<b>SJRA S222 SERENA 8015</b>												
	SJRA 671 TRAILBLAZER 8567											
	SJRA 8567 SERENA 2019											
	JMI 508 TRANQUIL 7039											
MPPA: 104 Dam Age: 03-18-2018												
	ProS	HB	GM	CED	BW	WW	YW	MILK	ME	HPG	CEM	STAY
EPD	118	59	59	11	0.2	76	118	27	14	12	6	18
Top%	29	38	30	78	84	15	21	33	95	50	78	11

I really appreciate the width and depth of hip and the thickness over the top in this moderate framed bull. Dam 8015 strong growth and carcass production numbers; Ave BW 85#, Ave ratios—NR 106 YR 107 REA 105. MGD 2019 was one of the strongest growth producers we have ever had. The cow line is noted for exceptional body length, clean and angular front, great milk production.



**SALE BULLS**



**LOT 413**



**LOT 414**

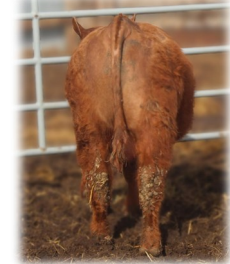
413		SJRA 837 MORGAN 413										
B	03-18-2024	A — 100%										
JDI / 413		5063031	Ratio		Data							
	FRITZ JUSTICE 8013		Act. BW	98	81							
	FRITZ JUSTICE 434A		Adj. WW	96	593							
	FRITZ BLOCKANA 3030		Adj. YW	102	1051							
<b>RED FRITZIE 837</b>												
	K2 CQSH TRADESMAN 841 380											
	RED TAMARA 6077											
	RED CHARLOTTE 0506											
	MLK CRK EPIC 0190											
	RED EXPLORER 4047											
	RED POLLY ANNA 9291											
<b>SJRA 4047 MOONIE B 8019</b>												
	SJRA 671 TRAILBLAZER 8567											
	SJRA 8567 MOONBEAM 3017											
	SJRA C62 MOONBEAM 6012											
MPPA: 97 Dam Age: 03-18-2018												
	ProS	HB	GM	CED	BW	WW	YW	MILK	ME	HPG	CEM	STAY
EPD	97	62	35	13	-1.6	62	101	23	8	9	8	18
Top%	60	31	82	45	53	64	58	73	76	90	27	13
This smaller frame bull exhibits a meaty quarter, with good length and nice width over the top. I feel he is a better bull than the numbers indicate. Dam 8019 is feminine and long with a nice udder. She has calved within a 9 day window year to year. Same cow family as Lot 411. MGD 3017 has two other daughters in production for us.												

414		SJRA 02264 MURPHY 414										
B	04-06-2024	A — 100%										
JDI / 414		5063033	Ratio		Data							
	MLK CRK ADVOCATE 4304		Act. BW	84	70							
	MLK CRK STEWARD 7334		Adj. WW	94	578							
	MLK CRK THUNDER 499		Adj. YW	88	909							
<b>HRR STEWARD 0264</b>												
	SHOCO DATA											
	HRR MADAME PRIDE 117											
	S A V MADAME PRIDE 2330											
	5L DEFENDER 560-30Z											
	5L GUARDIAN 2206 209B											
	5L MATTIE 1693-2206											
<b>J5 209B ESTONIA 9007</b>												
	VGW COLUMBIA 206											
	J5 206 ESTONIA B161											
	J5 L297 ESTONIA 92Y											
MPPA: 99 Dam Age: 03-11-2019												
	ProS	HB	GM	CED	BW	WW	YW	MILK	ME	HPG	CEM	STAY
EPD	109	53	56	14	-1.9	69	103	24	8	10	8	16
Top%	41	50	35	37	47	36	53	67	72	77	37	35
If you are looking for a meaty little heifer bull, this is your guy! He is small, but he sure packs a lot of dimension. Dam 9007 has an Ave BW of 73# on 4 calves. She is a super long cow, very feminine in type.												

**SALE BULLS**

415		SJRA 031 MONTY 415										
B	03-31-2024	A — 100%										
JDI / 415		5063035	Ratio		Data							
	BECKTON NEBULA P P707		Act. BW	98	77							
	BROWN JYJ REDEMPTION Y1334		Adj. WW	108	668							
	JYJ MS JOLENE W16		Adj. YW	106	1091							
<b>RED REDEMPTION 031</b>												
	HOLDEN BREAK THRU 143											
	RED HOLLY 4032											
	RED PERKY 804											
	FRITZ JUSTICE 434 A											
	RED FRITZIE 837											
	RED TAMARA 6077											
<b>SJRA 837 VIRTUE 1003</b>												
	VGW RELENTLESS 935											
	SJRA 935 VALORIE 1030											
	RED CHEIFTESS 9591											
MPPA: 103 Dam Age: 03-09-2021												
	ProS	HB	GM	CED	BW	WW	YW	MILK	ME	HPG	CEM	STAY
EPD	101	62	40	13	-2.4	61	95	27	5	10	7	18
Top%	54	32	74	50	38	69	71	35	56	85	47	15
This is a heifer bull with a little more frame than most in the pen. Nice and smooth through the front, good depth of rib and hip. This young cow has done well with her first two calves; Averages- BW 68#, NR 106, YR 108, plus it looks like she did a good job saving this calf in the cold! MGD 1030 produced this daughter at age 10 and her last calf in 2024; she pushes some good growth and carcass in the genetics.												

**LOT 415**



**LOT 416**

416		SJRA 031 MALACHI 416										
B	04-02-2024	A — 100%										
JDI / 416		5063037	Ratio		Data							
	BECKTON NEBULA P P707		Act. BW	110	87							
	BROWN JYJ REDEMPTION Y1334		Adj. WW	110	678							
	JYJ MS JOLENE W16		Adj. YW	103	1060							
<b>RED REDEMPTION 031</b>												
	HOLDEN BREAK THRU 143											
	RED HOLLY 4032											
	RED PERKY 804											
	BOWLES J5 LEGEND 7248											
	J5 LEGENDARY 9080											
	J5 87V MATTILDA 105Z											
<b>SJRA 9080 HERA 1009</b>												
	FRITZ CAPACITY CHIEF 8056											
	SJRA 8056 SWEET 3031											
	SJRA 605 SWEET 9056											
MPPA: 101 Dam Age: 03-31-2021												
	ProS	HB	GM	CED	BW	WW	YW	MILK	ME	HPG	CEM	STAY
EPD	112	71	41	11	-1.9	58	92	25	8	11	7	19
Top%	38	17	71	73	47	78	75	55	72	62	60	5
Nice hip capacity and good length on this bull. He also has depth throughout and a nice wide top. Dam 1009 has is clean fronted, with good length. The cow line features moderate frame, feminine cows that support good udders and dark, sturdy feet. The maternal indicators are strong in the line. This bull does have a birthmark-skin pigment is red-not a deterrent from a breeding value standpoint.												



**SALE BULLS**



**LOT 417**



**LOT 418**

<b>417</b>		<b>SJRA 031 MADIGAN 417</b>											
<b>B</b>	04-11-2024	<b>A — 100%</b>											
<b>JDI / 417</b>		<b>5063039</b>		<b>Ratio</b>	<b>Data</b>								
				Act. BW	98	77							
				Adj. WW	102	631							
				Adj. YW	101	1036							
							<b>EPD</b>	<b>Top%</b>	<b>Data</b>				
				MARB	0.39	58							
				YG	0.04	35							
				CW	13	84							
				REA	0.08	59							
				FAT	0.02	52							
				ADG	0.21	73	2.52						
				DMI	0.66	41							
		ProS	HB	GM	CED	BW	WW	YW	MILK	ME	HPG	CEM	STAY
<b>EPD</b>		115	78	37	11	-1.8	60	93	23	6	10	7	20
<b>Top%</b>		33	9	78	71	51	73	74	73	61	77	57	2

Look at the length in this bull! And that top is strong and level. This dude moves nice and free as well. Dam 1022 has some size to her from the 9080 sire. She looks to be a solid producer like her dam who has Lot 406. You can see some of the similarity in these two bulls.

<b>418</b>		<b>SJRA 2103 MACLIN 418</b>											
<b>B</b>	3/24/2024	<b>A — 100%</b>											
<b>JDI / 418</b>		<b>5063041</b>		<b>Ratio</b>	<b>Data</b>								
				Act. BW	90	68							
				Adj. WW	101	599							
				Adj. YW	101	1089							
							<b>EPD</b>	<b>Top%</b>	<b>Data</b>				
				MARB	0.44	45							
				YG	0.15	87							
				CW	23	52							
				REA	0.06	63							
				FAT	0.04	90							
				ADG	0.19	83	3.05						
				DMI	0.82	61							
		ProS	HB	GM	CED	BW	WW	YW	MILK	ME	HPG	CEM	STAY
<b>EPD</b>		122	86	36	14	-3.4	66	96	25	5	11	10	19
<b>Top%</b>		23	4	80	27	22	50	68	60	58	57	6	5

Small frame, easy fleshing, naturally thick from end to end, smooth shoulders-all nice traits in a heifer bull. A solid 1st calf effort from this heifer. Strong growth and carcass traits run deep in this cow line, especially the marbling.

**SALE BULLS**



**LOT 419**



**LOT 420**

<b>419</b>		<b>SJRA WHY 2103 MAKSON 419</b>											
<b>B</b>	04-04-2024	<b>A — 100%</b>											
<b>JDI / 419</b>		<b>5063043</b>		<b>Ratio</b>	<b>Data</b>								
				Act. BW	105	80							
				Adj. WW	101	601							
				Adj. YW	100	1081							
							<b>EPD</b>	<b>Top%</b>	<b>Data</b>				
				MARB	0.55	26							
				YG	0.13	80							
				CW	20	65							
				REA	0.03	69							
				FAT	0.04	84							
				ADG	0.18	86	2.99						
				DMI	0.74	51							
		ProS	HB	GM	CED	BW	WW	YW	MILK	ME	HPG	CEM	STAY
<b>EPD</b>		125	84	41	15	-3.5	67	96	22	5	12	11	18
<b>Top%</b>		20	6	72	19	21	46	69	82	54	47	2	10

Pick a pair with Lot 418-these two are very much alike, though this one has a bit more BW. He is a stout one for being a smaller bull. He carries good natural thickness and depth. Disposition is great too! Dam 2020 is moderately made and quite feminine. She hits the top 1/3 of the breed for all three economic traits. The MGD is a personal favorite of mine and has a herd bull at Hance Red Angus.

<b>420</b>		<b>SJRA 203J MARCOS 420</b>											
<b>B</b>	02-29-2024	<b>A — 100%</b>											
<b>JDI / 420</b>		<b>5063045</b>		<b>Ratio</b>	<b>Data</b>								
				Act. BW	104	78							
				Adj. WW	101	598							
				Adj. YW	100	1080							
							<b>EPD</b>	<b>Top%</b>	<b>Data</b>				
				MARB	0.54	27							
				YG	0.06	49							
				CW	19	67							
				REA	0.12	51							
				FAT	0.02	62							
				ADG	0.22	69	3.00						
				DMI	0.73	51							
		ProS	HB	GM	CED	BW	WW	YW	MILK	ME	HPG	CEM	STAY
<b>EPD</b>		127	72	54	17	-3.6	58	93	27	7	11	11	18
<b>Top%</b>		19	15	39	7	18	78	75	35	69	55	3	14

Lots of strengths in this bull: good gain, strong calving ease numbers, strong economic traits, good marbling indicators. This young dam shows lots of promise, with ProS, HB and GM all in the top 25% of breed. Her calving ease numbers are top 15% or better. MGD 6025 birthed 5 calves at an Ave BW of 72#; Ave NR 100, Ave YR 104, Ave IMF 123. Lost 6025 prematurely to snakebite, 2021 was her last calf.





**SALE HEIFERS**

4013		SJRA 863 MARLEE 4013										
C	03-23-2024	A — 100%										
JDI / 4013		5063125	Ratio		Data							
	BECKTON EPIC R397 K		Act. BW	120	88							
	RED ED 1018		Adj. WW	110	615							
	RED DINA 3468											
RED ED 863			EPD Top%		Data							
	FRITZ JUSTICE 434A		MARB	0.41	51							
	RED FRANNY 6083		YG	0.05	39							
	RED JIGGY 4077		CW	25	43							
	CRUMP RED LINED 270		REA	0.14	45							
	RED LINED 5125		FAT	0.01	36							
	RED FIONA 0267		ADG	0.29	17							
SJRA 5125 WINDSONG 8007			DMI	0.86	65							
	LAUBACH TURBO 710											
	SJRA 710 WINDSONG 1002											
	SJRA V016 WINDSONG 2453											
MPPA: 106	Dam Age: 03-22-2018											
	ProS	HB	GM	CED	BW	WW	YW	MILK	ME	HPG	CEM	STAY
EPD	108	53	54	10	0.2	72	119	28	14	10	7	17
Top%	44	50	39	81	85	25	20	31	95	72	48	21
<p>This cow line is noted for bigger stature cows, that stand on a stout frame with good feet and producing lots of milk. The dam is moderated a little from the Red Lined sire. She is proving herself to be a great producer. Her production ratio averages: BW 106, NR 108, YR 107. Her only bull posted 126 IMF Ratio, 112 REA Ratio, 109 BF Ratio.</p>												

4022		SJRA 031 MADRID 4022										
C	03-07-2024	A — 100%										
JDI / 4022		5063143	Ratio		Data							
	BECKTON NEBULA P P707		Act. BW	97	67							
	BROWN JYJ REDEMPTION Y1334		Adj. WW	106	594							
	JYJ MS JOLENE W16											
RED REDEMPTION 031			EPD Top%		Data							
	HOLDEN BREAK THRU 143		MARB	0.51	30							
	RED HOLLY 4032		YG	0.05	41							
	RED PERKY 804		CW	17	73							
	5L BOURNE 117-48A		REA	0.12	50							
	VGW BOURNE 719		FAT	0.02	58							
	VGW A134-FIREFLY 1556		ADG	0.22	68							
SJRA 719 HAZY 1013			DMI	0.89	68							
	VGW BENCH MARK 728											
	SJRA V728 DONNA 4021											
	SJRA 605 SWEET 9056											
MPPA: 102	Dam Age: 03-30-2021											
	ProS	HB	GM	CED	BW	WW	YW	MILK	ME	HPG	CEM	STAY
EPD	122	77	45	13	-2.8	64	99	26	6	12	7	19
Top%	23	10	62	44	32	58	63	42	64	40	44	6
<p>This was a heifer that I liked all summer. Strong topline, clean lines, good length. She is 11th generation from a foundation Bootjack cow. The ten cows behind her all show MPPA of 100 or better; MGGD 9056 posted 109 at age 10. These same cows all show positive ratios for growth as well. A family of moderate frame, broody, milky cows from the foundation.</p>												

4034		SJRA 2013 MERIDA 4034										
C	03-22-2024	A — 100%										
JDI / 4034		5063165	Ratio		Data							
	STRA GENERAL 882		Act. BW	104	68							
	STRA ADMIRAL 0150		Adj. WW	114	601							
	STRA BANDITO 8132											
STRA ADMIRAL 2103			EPD Top%		Data							
	RREDS SENECA 731C		MARB	0.40	54							
	STRA COLLEEN 058		YG	0.19	95							
	STRA COLLEEN 619		CW	25	41							
	FRITZ JUSTICE 434A		REA	0.01	74							
	RED FRITZIE 837		FAT	0.05	95							
	RED TAMARA 6077		ADG	0.21	72							
SJRA R837 KENDRA 2028			DMI	0.88	67							
	JKW HEAD WEST 601											
	SJRA V601 CHICARI 9004											
	SJRA 671 CHICARI 8540											
MPPA: 106	Dam Age: 04-09-2022											
	ProS	HB	GM	CED	BW	WW	YW	MILK	ME	HPG	CEM	STAY
EPD	104	72	33	14	-2.4	70	103	25	7	10	9	18
Top%	49	16	85	33	39	33	53	53	71	76	10	14
<p>Long live cows! This gem is 13th generation from the first registered cow we owned. In that line, ten of the twelve cows range from 101 to 106 for MPPA. They are 10 for 12 on average NR over 100, and 7 for 12 on average YR over 100. These are a line of cows with exceptional length of spine, femininity, and moderate frame.</p>												

## **Terms and Conditions**

### **Terms:**

The terms of the sale are cash. All settlements will be made with the clerks of the sale immediately following the conclusion of the sale and before any cattle will be released.

### **Bidding Disputes:**

The Auctioneer in charge will settle any disputes as to bids, and their decision on such matters shall be final.

### **Purchaser's Risk:**

Each animal becomes the risk of the purchaser as soon as sold. Any animals left in the care of the Seller after the sale shall be reasonably cared for and Buyer will be advised of any health issues that should arise while in the Seller's care. **Arrangements can be made with a qualified agent if insurance is desired for mortality and/or loss of use.**

### **Announcements:**

Changes of information contained in this catalog relating to the animals offered for sale will be announced on the day of the sale, prior to the sale of the animal, and such announcements shall take precedence over the printed matter.

### **Registration Certificates:**

A certificate of registry and transfer will be furnished on all registered cattle, at the buyers request and after settlement has been made. Certificates will specify exact percentage of Red Angus blood as is applicable. Please be sure to inform the clerk at time of settlement, how you would like the papers transferred.

### **Identification:**

Each registered animal carries a readable tattoo. Every effort will be made to tag the animals with appropriate identification as well.

## **Terms and Conditions-cont.**

### **Breeding Guarantee:**

**All bulls are sold as guaranteed breeders for the first 180 days only. They have passed a fertility and soundness exam to be offered in the sale. Any heifers offered are guaranteed open. Any claims for refund or adjustment must be made in writing within six months of the sale date. In the event an animal is claimed to be a non-breeder, the purchaser may be asked to return the animal to the ranch of the seller, in good condition and complying with the health requirements of the Seller's state. Upon said return, the Seller will reclaim ownership of the animal. The Seller will then be obligated to offer a suitable and comparable replacement; credit towards the purchase of another animal; or refund of the purchase price less any salvage value received by the Buyer, in the event that the animal has been sold. Such replacement, credit, or refund shall in any case be deemed full satisfaction and settlement. This is a breeding soundness guarantee. We cannot be responsible for mortality or physical injury once the animal is no longer under our management; insurance is available for these risks.**

### **Liability:**

Neither owners, sale managers, clerks, nor anyone else connected with the sale, assumes responsibility, legal or otherwise for damage of any kind.

### **Retained Interest:**

Seller reserves the right to keep a breeding interest in any bull so designated in the catalog or during the auction. In the event the seller elects to collect semen from a designated bull, it will be done at the seller's expense and during such time that is convenient to the purchaser. There will be a written agreement to outline specific terms.

### **Guarantee:**

Except for those stated in the terms and conditions above, there are no warranties, expressed or implied, as to merchantability for fitness for a particular purpose with respect to the cattle being sold in this auction. The warranties set forth in the terms and conditions are in lieu of all other warranties, either expressed or implied, and the remedies provided therein shall be the sole and exclusive remedy of the buyer, or any party claiming through the buyer, for any breach of warranty or guarantee therein provided and all other obligations or liabilities.

### **Contract:**

The above terms and conditions shall constitute a contract between the Buyer and Seller of each animal sold.